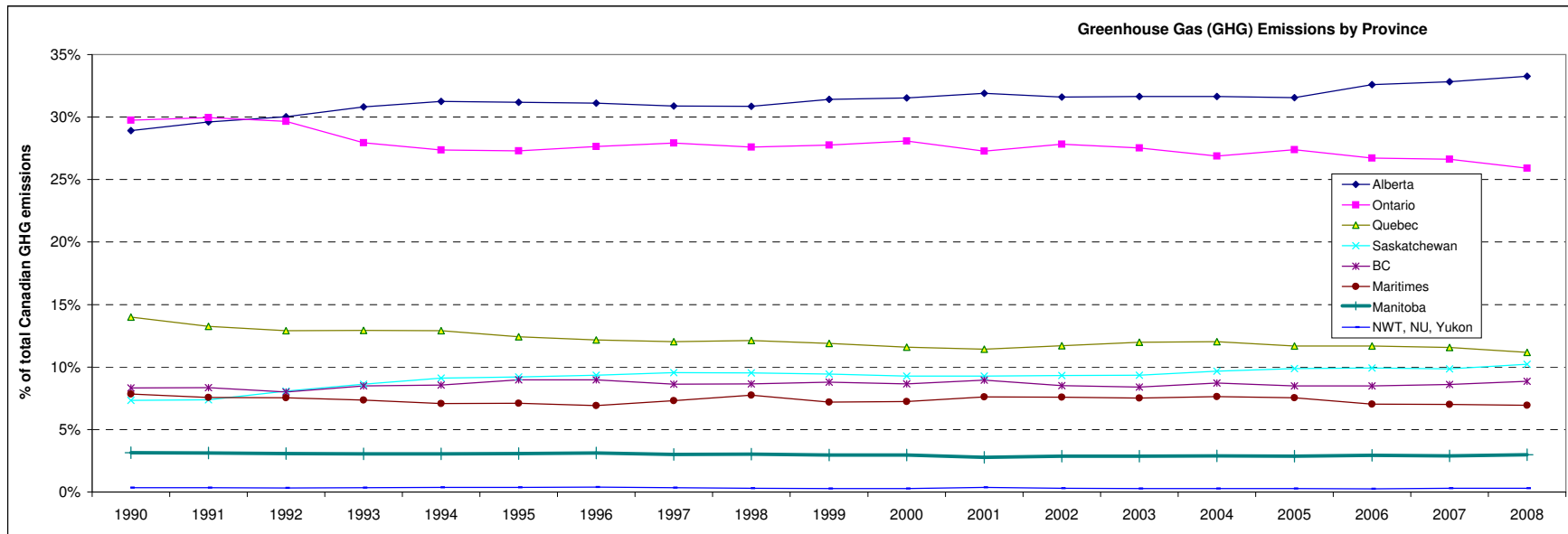


Greenhouse Gas (GHG) Emissions - Canada

kt CO ₂ equivalent	1990	1991	1992	1993	1994	1995	1996	1997	1998	1999	2000	2001	2002	2003	2004	2005	2006	2007	2008
Canada	591,793	584,655	602,448	603,611	623,546	640,995	659,283	672,264	678,445	690,931	717,102	711,090	716,849	740,626	740,826	730,967	718,178	750,329	734,420
Maritimes	46,346	44,279	45,402	44,448	44,186	45,552	45,623	49,172	52,622	49,758	51,939	54,063	54,425	55,711	56,528	55,110	50,471	52,555	50,917
Quebec	82,783	77,477	77,825	78,105	80,547	79,663	80,271	80,920	82,185	82,207	83,149	81,186	83,922	88,827	89,071	85,438	83,834	86,810	82,025
Ontario	175,990	175,145	178,674	168,731	170,633	174,954	182,264	187,743	187,207	191,753	201,396	193,970	199,460	203,856	199,070	200,245	191,928	199,729	190,265
Manitoba	18,620	18,309	18,467	18,467	18,978	19,793	20,598	20,181	20,623	20,494	21,287	19,787	20,570	21,229	21,365	20,988	21,122	21,711	21,898
Saskatchewan	43,430	43,119	48,663	52,120	56,811	59,085	61,577	64,180	64,681	65,164	66,570	65,945	66,817	69,241	71,674	72,251	71,337	74,026	75,029
Alberta	171,152	173,069	180,879	186,045	194,852	199,912	205,190	207,565	209,439	217,083	226,178	226,845	226,470	234,457	234,423	230,651	234,163	246,293	244,323
BC	49,284	48,886	48,248	51,223	53,302	57,607	59,204	58,072	58,699	60,701	62,049	63,646	61,048	62,187	64,607	62,051	61,053	64,496	65,061
NWT, NU, Yukon	2,046	1,999	1,912	2,091	2,266	2,440	2,611	2,293	2,041	1,856	2,071	2,610	2,239	2,131	2,087	1,946	1,787	2,264	2,159

	1990	1991	1992	1993	1994	1995	1996	1997	1998	1999	2000	2001	2002	2003	2004	2005	2006	2007	2008
Alberta	29%	30%	30%	31%	31%	31%	31%	31%	31%	31%	32%	32%	32%	32%	32%	32%	33%	33%	33%
Ontario	30%	30%	30%	28%	27%	27%	28%	28%	28%	28%	28%	27%	28%	28%	27%	27%	27%	27%	26%
Quebec	14%	13%	13%	13%	13%	12%	12%	12%	12%	12%	12%	11%	12%	12%	12%	12%	12%	12%	11%
Saskatchewan	7%	7%	8%	9%	9%	9%	9%	10%	10%	9%	9%	9%	9%	9%	10%	10%	10%	10%	10%
BC	8%	8%	8%	8%	9%	9%	9%	9%	9%	9%	9%	9%	9%	8%	9%	8%	9%	9%	9%
Maritimes	8%	8%	8%	7%	7%	7%	7%	7%	8%	7%	7%	8%	8%	8%	8%	8%	7%	7%	7%
Manitoba	3%	3%	3%	3%	3%	3%	3%	3%	3%	3%	3%	3%	3%	3%	3%	3%	3%	3%	3%
NWT, NU, Yukon	0%	0%	0%	0%	0%	0%	0%	0%	0%	0%	0%	0%	0%	0%	0%	0%	0%	0%	0%



Data source: Environment Canada Greenhouse Gas Inventory: <http://www.ec.gc.ca/ges-ghg/>